

# Covid-19 parameters

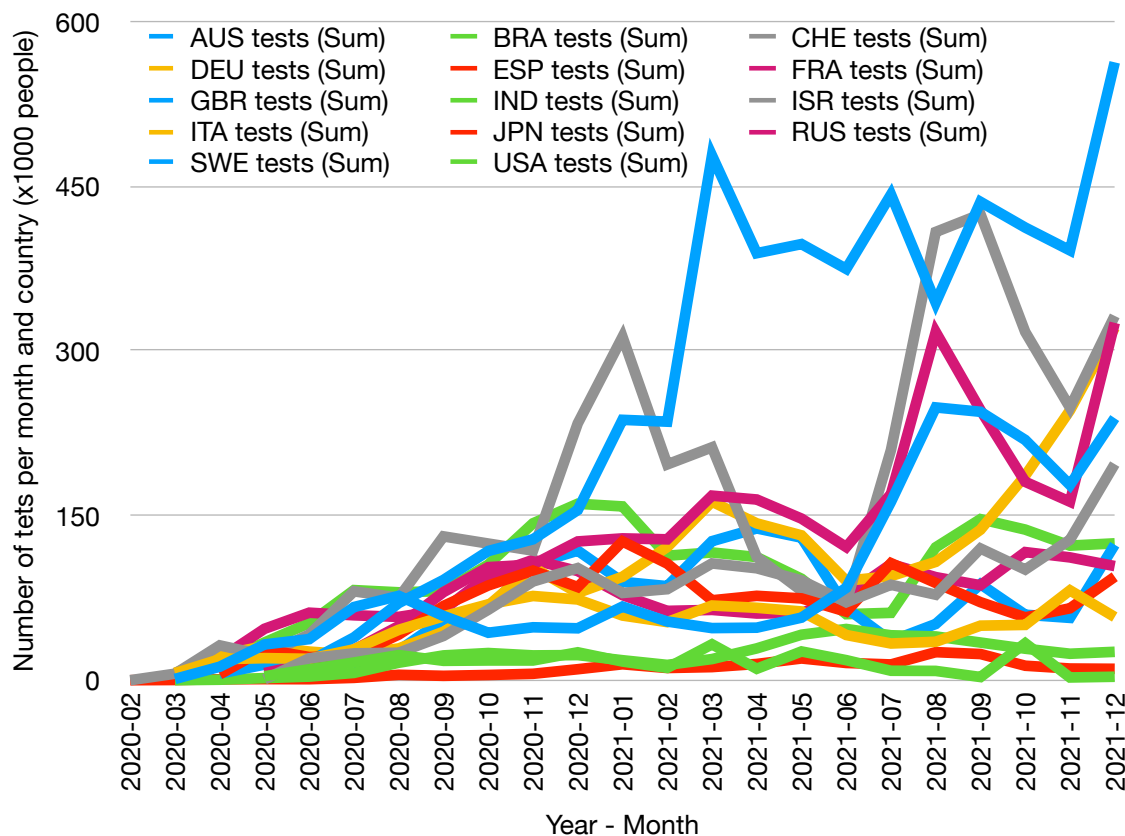
## Number of tests

After almost two years of pandemic, we would like to analyse the main parameters for a few countries and compare impact amongst them.

The list of selected countries are: AUS (Australia), BRA (Brazil), CHE (Switzerland), DEU (Germany), ESP (Spain), FRA (France), GBR (United Kingdom), IND (India), ISR (Israel), ITA (Italy), JPN (Japan), RUS (Russia), SWE (Sweden), USA (United States).

We start in this first post with the number of tests per month and country x 1000 inhabitants.

**fig. 14.1 - Number of tests x 1000 people**



Total number of tests per x 1000 inhabitants for the full 2020 and 2021 years:

AUS	BRA	CHE	DEU	ESP	FRA	GBR
2'073	307	1'611	1'075	1'461	2'776	5'342
IND	ISR	ITA	JPN	RUS	SWE	USA
484	3'793	2'271	221	1'639	1'434	2'125