

How is the labour structure in countries?

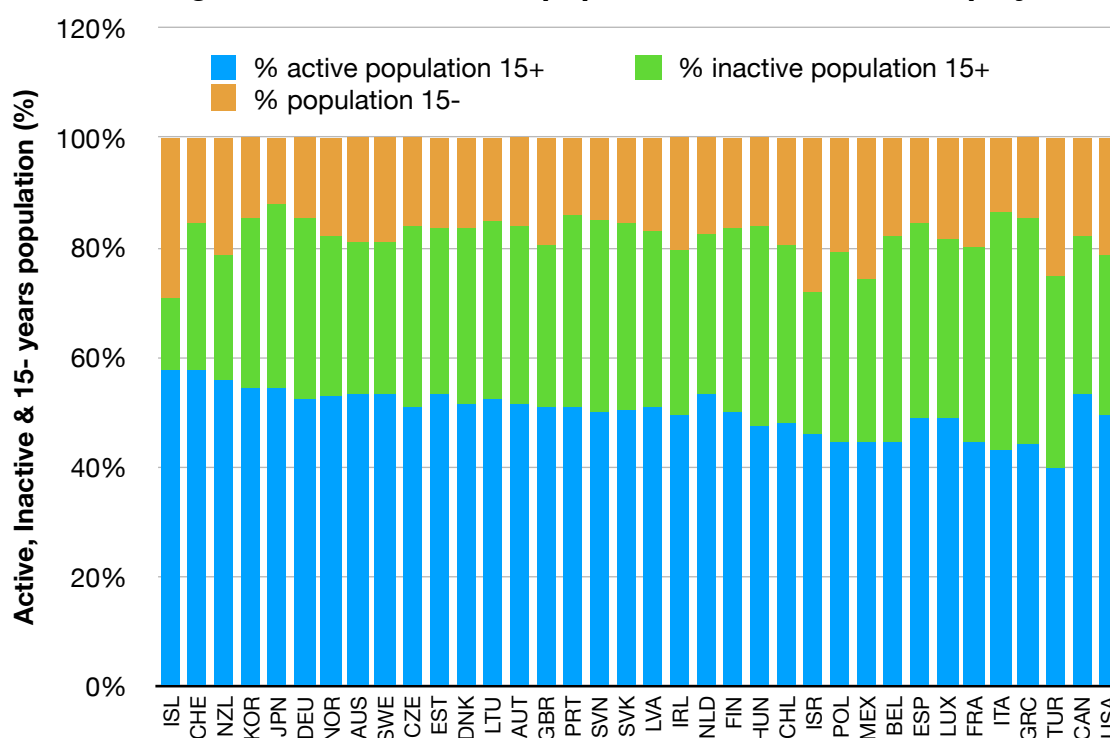
Scope - Employment figures

Definition: Several variables are used in the below analysis related to employment:

- Active population 15+: People above 15 years old willing to work.
- Inactive population 15+: People above 15 years old not willing / not being able to work.
- Population 15-: People below 15 years old - not able to work, by definition.
- % employment: % of people working / population in a country.
- % unemployment: % of people willing to work but not working / active population.

Scope: The countries included in the analysis are listed below, ordered by % of employment in 2018.

fig. 4.1. Active / Inactive population in order of % employment



The countries with higher percentage of employment are generally the countries also with higher percentage of active population.

Greece, Spain and Italy are countries with % unemployment above 10% and, therefore, in the low ranking of % employment.

fig. 4.2. Unemployment over active population in order of % employment

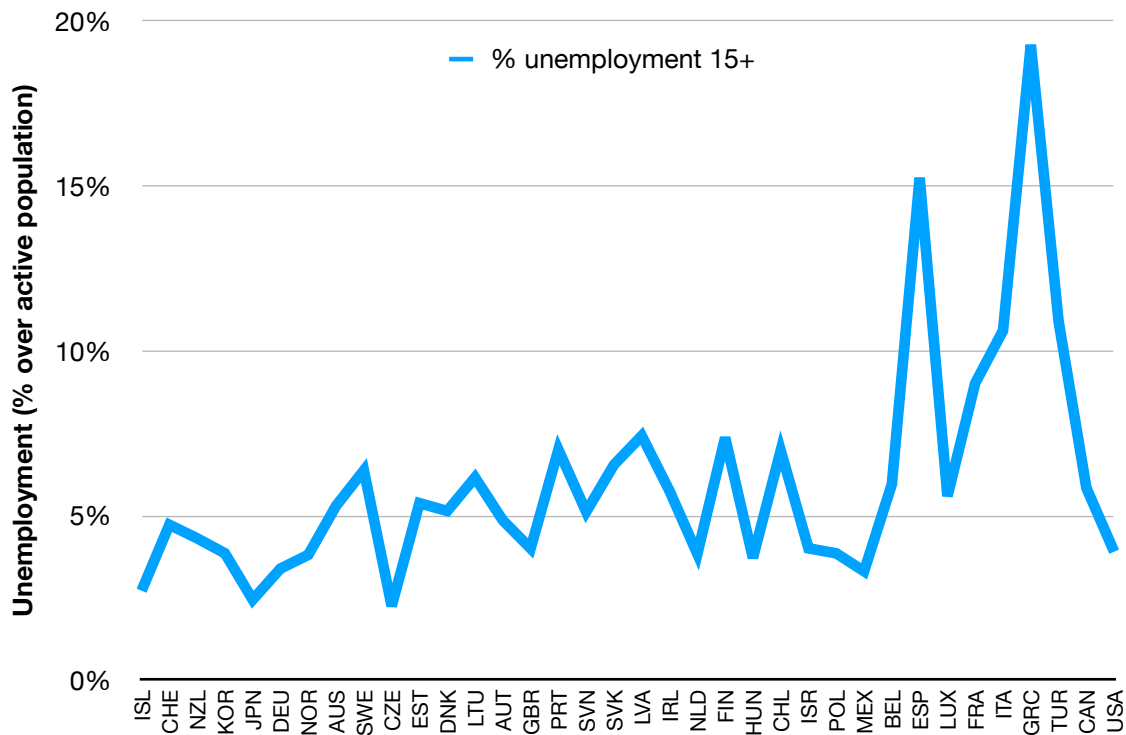
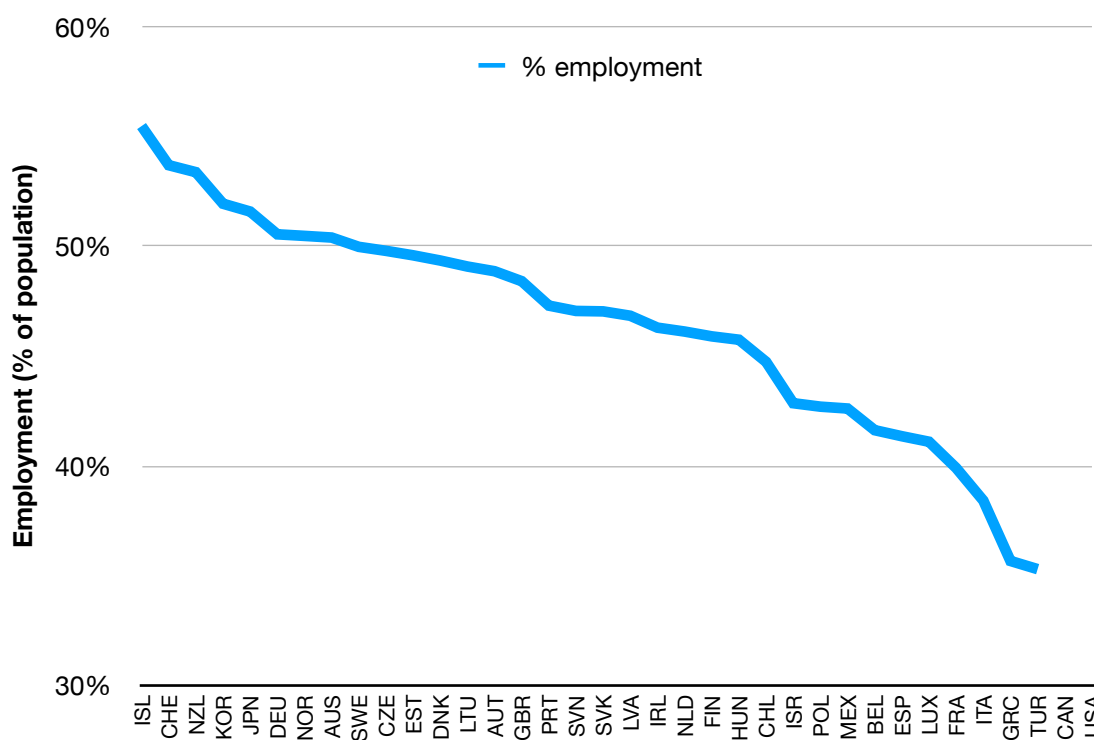


fig. 4.3. Countries in order of % employment



Data source: OECD data

- <https://data.oecd.org>