

Why some countries are wealthier than others?

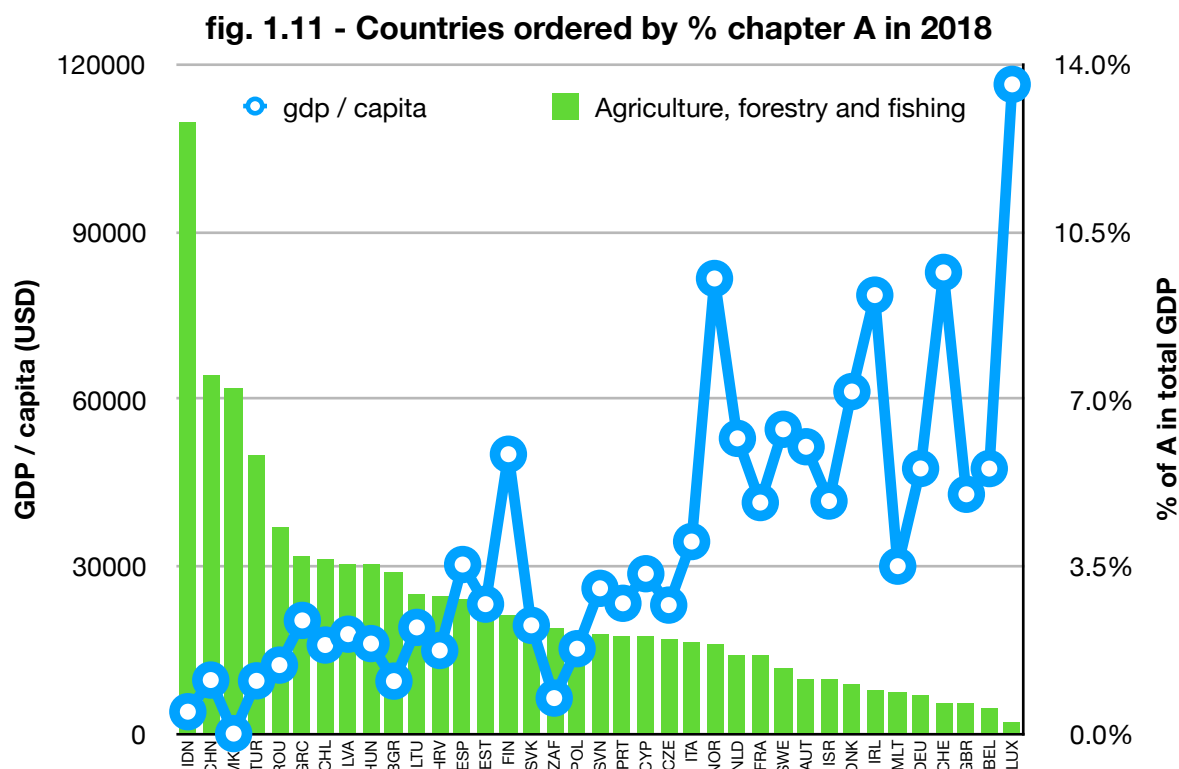
Analysis variables 2 of 4

In this second section, we will analyse the **composition of the GDP** per country, and how it relates to the GDP / capita.

Summary: Looking at each of the GDP chapters, we can see different relations with GDP / capita,

- **Negative correlation** between GDP / capita and **A** - Agriculture, forestry and fishing (-0.58), **G-I** - Distributive trade, repairs; transport; accommod., food serv. (-0.47); the least weight of **A** or **G-I** in the overall GDP, the higher the GDP / capita. Chapters **A** and **G-I** have then a low value in the overall GDP composition.
- **Neutral correlation** between GDP / capita and **B-E** - Industry, including energy (-0.22), **F** - Construction (-0.18), **J** - Information and communication (0.31), **L** - Real estate activities (0.05).
- **Positive correlation** between GDP / capita and **K** - Financial and insurance activities (0.52), **M-N** : Prof., scientific, techn.; admin., support serv. activities (0.52), **O-Q** - Public admin.; compulsory s.s.; education; human health (0.43); the more weight of **K**, **M-N** or **O-Q** in the overall GDP, the higher the GDP / capita; these chapters are consider as the highest value in the GDP compositions.
- However, **none** of these variables have a **high** or **very high** correlation with the GDP / capita.

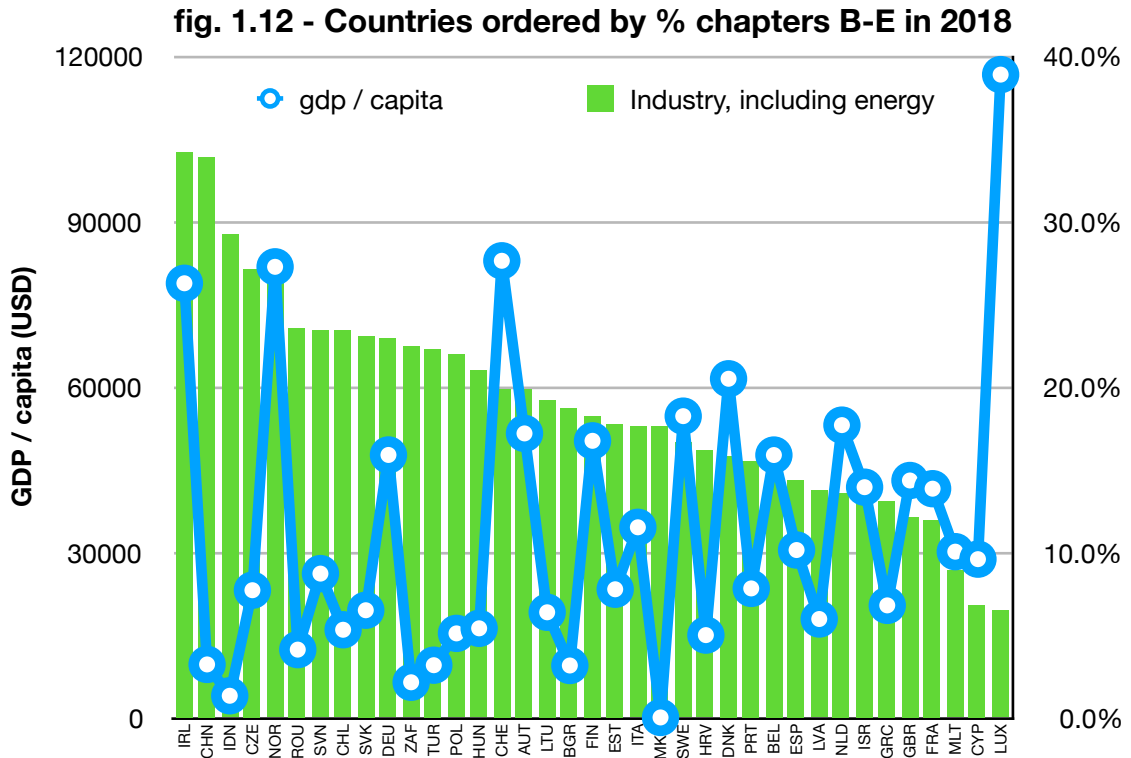
Chapter A : Agriculture, forestry and fishing - correlation factor -0.58 (medium)



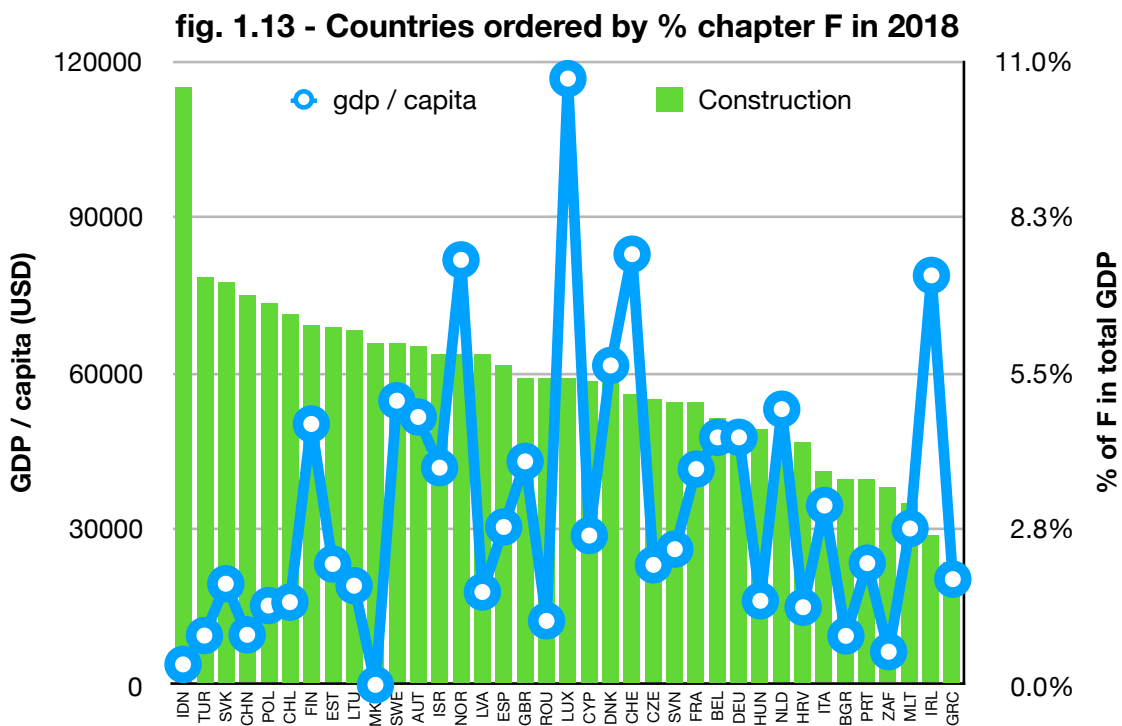
Data source: OECD data

- <https://data.oecd.org>

Chapters B-E : Industry, including energy - correlation factor -0.22 (low)

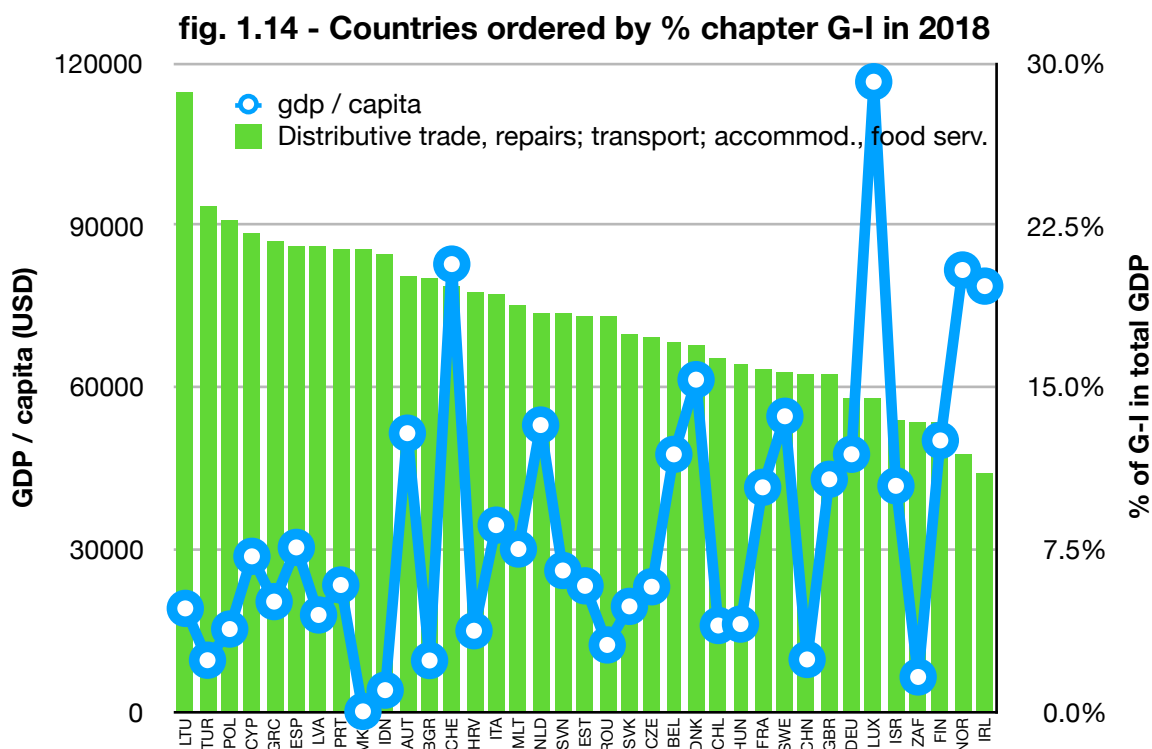


Chapter F : Construction - correlation factor -0.18 (very low)

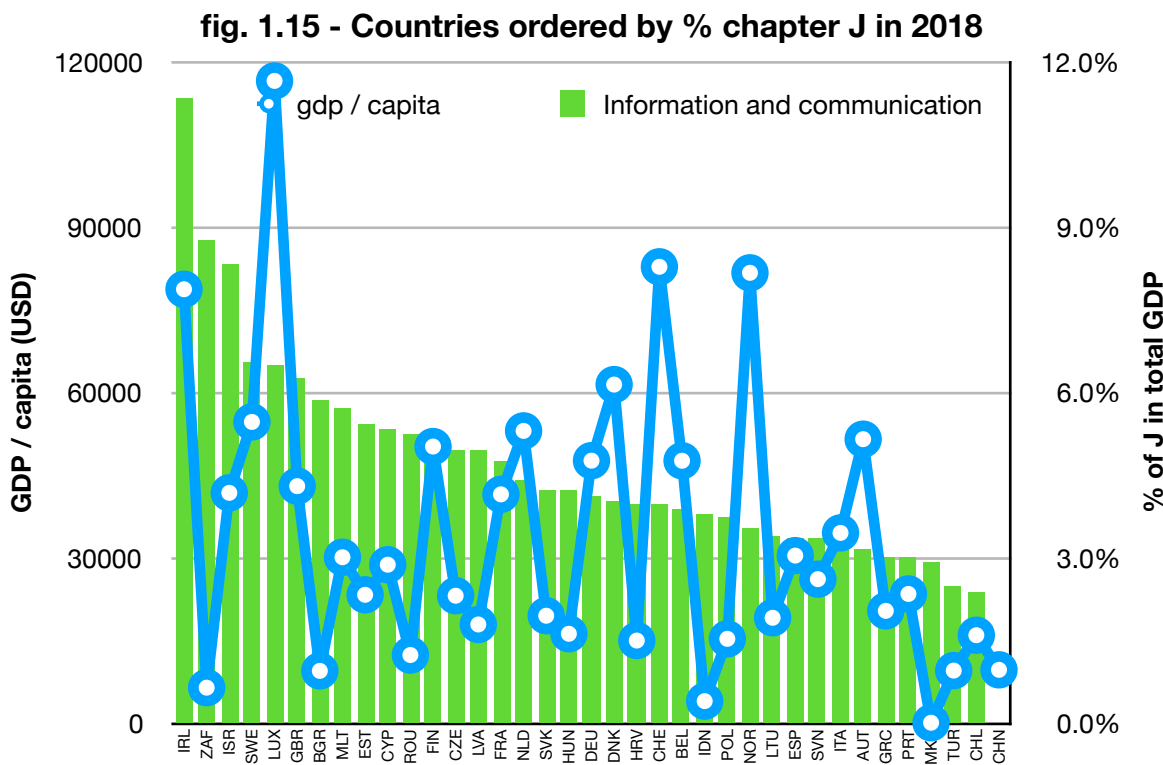


Data source: OECD data
 - <https://data.oecd.org>

Chapters G-I : Distributive trade, repairs; transport; accommod., food serv. - correlation factor -0.47 (medium)

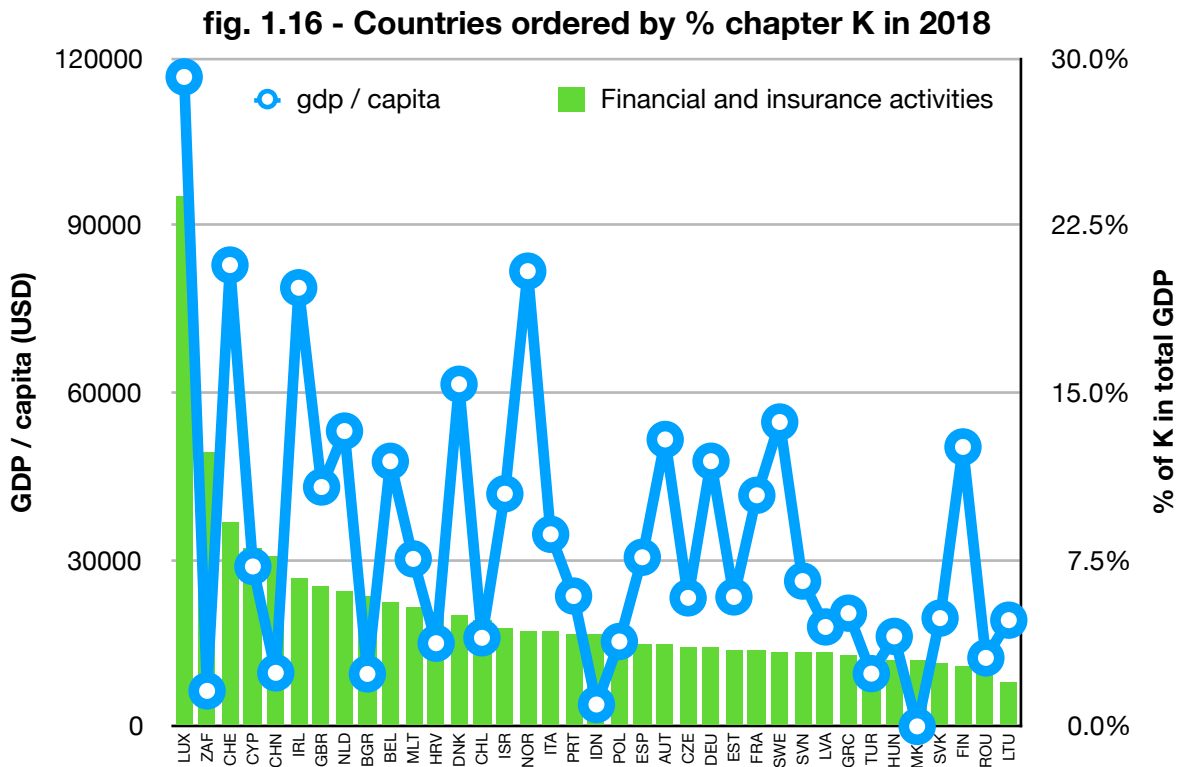


Chapter J : Information and communication - correlation factor 0.31 (low)

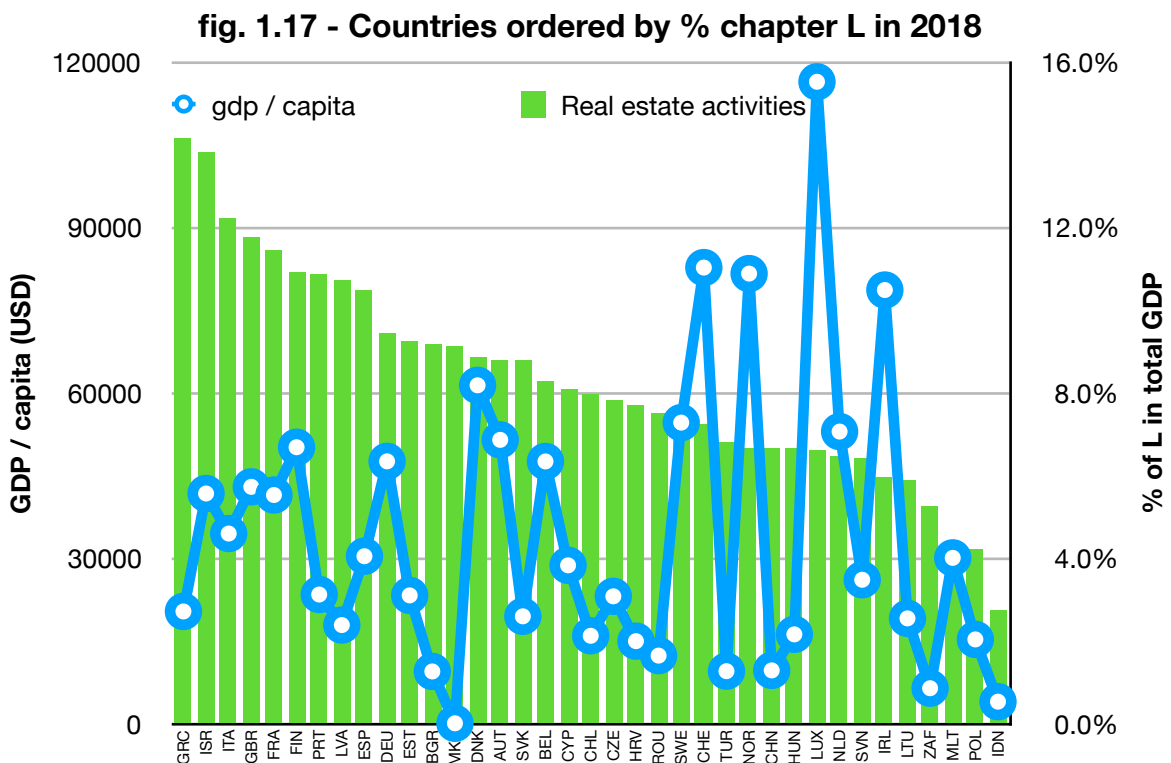


Data source: OECD data
 - <https://data.oecd.org>

Chapter K : Financial and insurance activities - correlation factor 0.52 (medium)



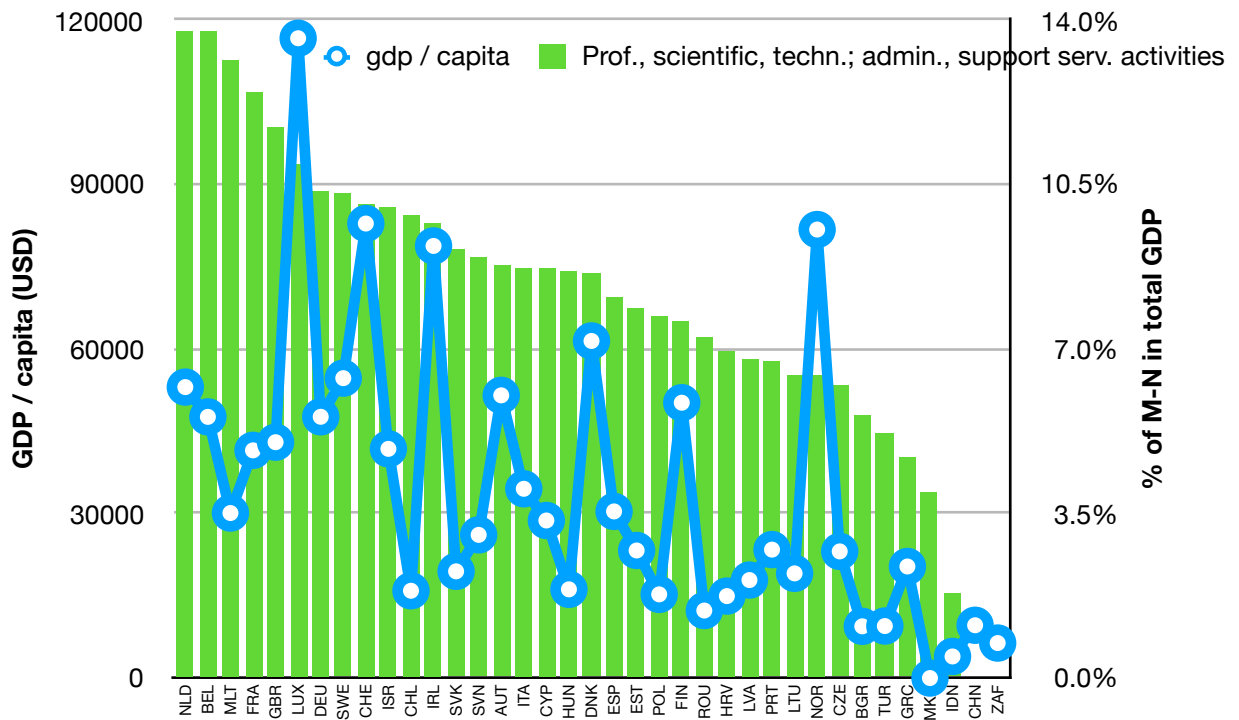
Chapter L : Real estate activities - correlation factor 0.05 (very low)



Data source: OECD data
 - <https://data.oecd.org>

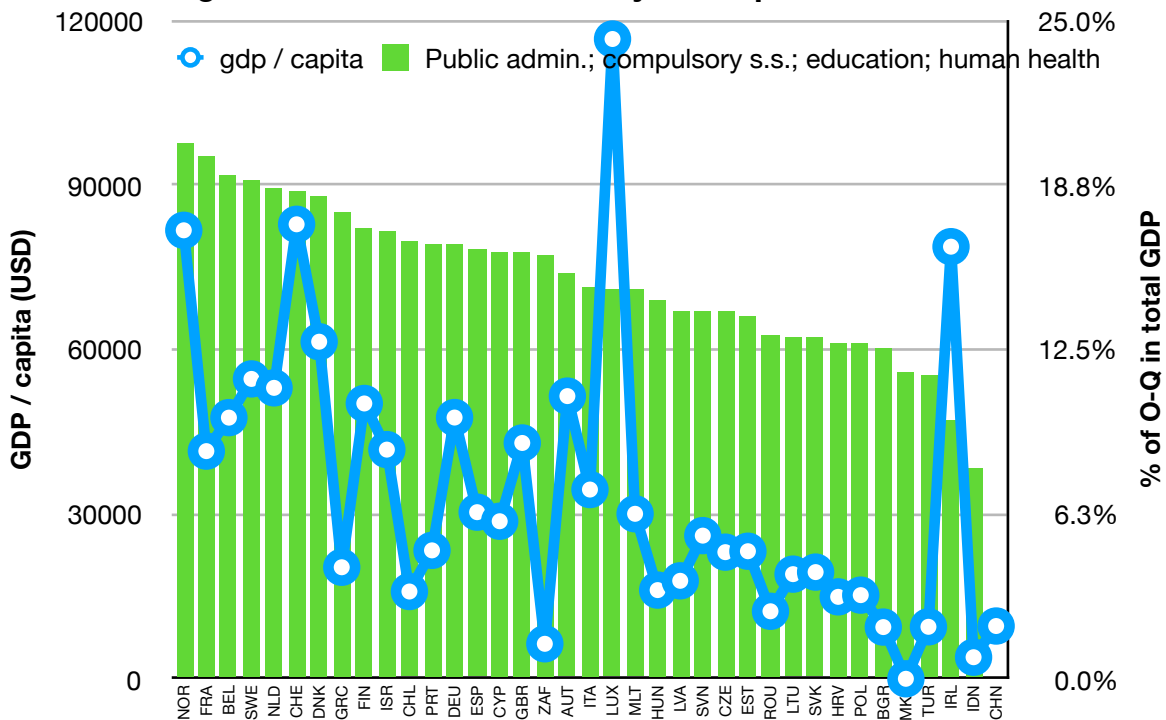
Chapters M-N : Prof., scientific, techn.; admin., support serv. activities - correlation factor 0.52 (medium)

fig. 1.18 - Countries ordered by % chapter M-N in 2018



Chapters O-Q : Public admin.; compulsory s.s.; education; human health - correlation factor 0.43 (medium)

fig. 1.19 - Countries ordered by % chapter O-Q in 2018



Data source: OECD data
 - <https://data.oecd.org>